

# Tube Systems Syringes Contrast Injector Systems for CT and MRI



# MultiCSafe® DoubleCSafe®



## SPECIAL: flexible in use

Shortened spike allows the efficient use of the whole contrast media volume.

Luer-lock connector provides a maximum of flexibility and enables easy connection to different contrast media containers.

## ADAPTED: Integrated extension

Cost advantage by time optimization within the workflow including lower risk of contamination.

Considerable longer tube length to patient-tube:

- no external extension necessary
- reduced contamination risk due to less junctions

## FUNCTIONALITY via integrated Swabable

The integrated Swabable opens up when connected and automatically locks when disconnected from the patient-tube. MultiCSafe® is designed to support the idea of a closed system.

Improves hygiene and patient safety.

Easy to handle via color marking.

## EXCEPTIONAL: 5 + 2 check valves

With a total of seven check valves MultiCSafe® (5) and DoubleCSafe® (2) reach a unique safety profile.

High sanitary protection against pathogenic germs.

## RAISED SANITARY: Optimized patient-tube for improved hygiene

The longer patient-tube prevents direct contact of the transfer tube with the patient's skin. This keeps pathogenic organisms at a distance and reduces the risk of contamination.

Two check valves in the patient-tube avoid migration of pathogenic germs.

The patient-tube is available in different lengths and types.

## 6 THINGS you won't miss in the future:

THRIFT

FUNCTIONALITY

EFFICIENCY

HYGIENE

SAFETY

QUALITY

Available products and configurations (as of September 30, 2021)

Item №	Item	Length / Configuration	Sales unit
105097	DTS 100 CT + MRI MultiCSafe®	100 cm straight tube	25 pcs.
105098	DTS 150 CT + MRI MultiCSafe®	150 cm straight tube	25 pcs.
105099	DTS 200 Spiral CT + MRI MultiCSafe®	200 cm spiral tube	25 pcs.
105104	DTS 250 Spiral CT + MRI MultiCSafe®	250 cm spiral tube	25 pcs.
105091	PT 50 CT + MRI DoubleCSafe®	50 cm straight tube	100 pcs.
105092	PT 100 CT + MRI DoubleCSafe®	100 cm straight tube	100 pcs.
105096	PT 150 CT + MRI DoubleCSafe®	150 cm straight tube	100 pcs.



Fig. 1: PT 50 CT+MRI DoubleCSafe

Fig. 2: MultiCSafe®-  
integrated Swabable



Fig. 3: DTS 150 CT+MRI MultiCSafe

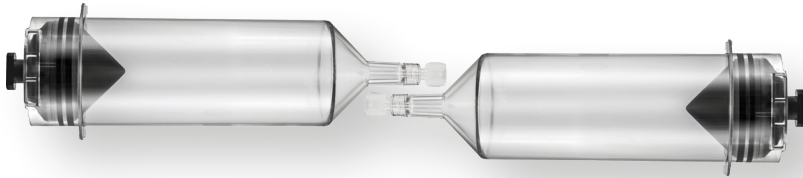
\*valid for all MultiCSafe® systems





**High Pressure Syringe 200 ml, single**  
Item № 105105 / 50 pcs.

Compatible with Zenith C-22



**High Pressure Syringe 200 ml, double**  
Item № 105106 / 30 sets á 2 pcs.

Compatible with Zenith C-22



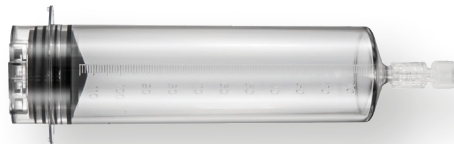
**High Pressure Syringe 65 ml, single**  
Item №. 105108 / 60 pcs.

Compatible with Zenith C-60  
Compatible with Medrad Spectris / Solaris



**High Pressure Syringe 65 ml, double**  
Item № 105107 / 50 sets á 2 pcs.

Compatible with Zenith C-60  
Compatible with Medrad Spectris



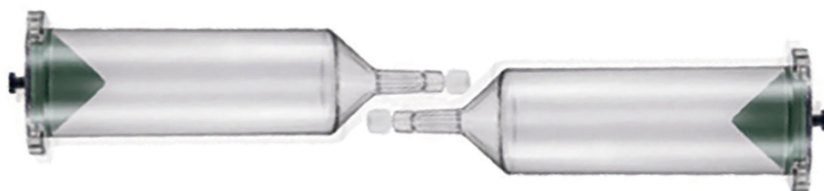
**High Pressure Syringe 115 ml, single**  
Item № 105111 / 60 pcs.

Compatible with Medrad Spectris Solaris



**High Pressure Syringe 200 ml, single**  
Item № 105109 / 50 pcs.

Compatible with Medtron Accutron CT  
Compatible Medtron Accutron MR



**High Pressure Syringe 200 ml, double**  
Item № 105110 / 30 sets á 2 pcs.

Compatible with Medtron Accutron CT  
Compatible Medtron Accutron MR



**High Pressure Syringe 65 ml, single**  
Item № 105084 / 60 pcs.

Compatible with Medtron Accutron MR



# Zenith C-22

## Dual-head Injector System for CT



The C-22 dual-head injector meets all requirements for contrast-enhancing scans in multi-layer CT, including state-of-the-art clinical applications.

### Features and specifications:

- Precise injection timing for optimum contrast at minimal radiation exposure.
- Individual injection profiles with up to eight phases.
- The KVO program (Keep Vein Open) prevents blood clotting and thus vascular occlusion.
- Intuitive operation due to large colour touch screen and the easy-to-understand user interface.
- Greatest possible hygiene due to the smooth and clear design.
- **Syringe capacity: 2 x 200 ml**
- **Flow rate: programmable from 0.1 - 10.0 ml/sec in steps of 0.1 ml/sec.**
- **Pressure limitation: variable, adjustable from 50 psi to 300 psi**

### Technical specifications / injection parameters:

- Injector head and base dimensions: 47 cm (W) x 63 cm (D) x 119 cm (H), Weight: 19.5 kg
- Large 12.1" Color Touch Screen, Weight: 4.1 kg
- Electrical Requirements: 220 V AC; 50/60 Hz
- Syringe 1 (for contrast media): capacity 200 ml, volume 0 ml to max. syringe capacity in 1 ml increments
- Syringe 2 (for saline injection): capacity 200 ml, volume 0 ml to max. syringe capacity in 1 ml increments
- Delay time: 0 to 3599 seconds, automatic refill: 3 – 8 ml/sec,
- Injection capabilities: 1 to 8 phases, storage capabilities: 100 protocols
- Test injection: test volume 1-10 ml and flow rate 1 – 3 ml/s
- Pause phase: 0 second to 999 seconds in 1 second increments
- KVO: programmable 0,1 ml/min – 0,6 ml/min

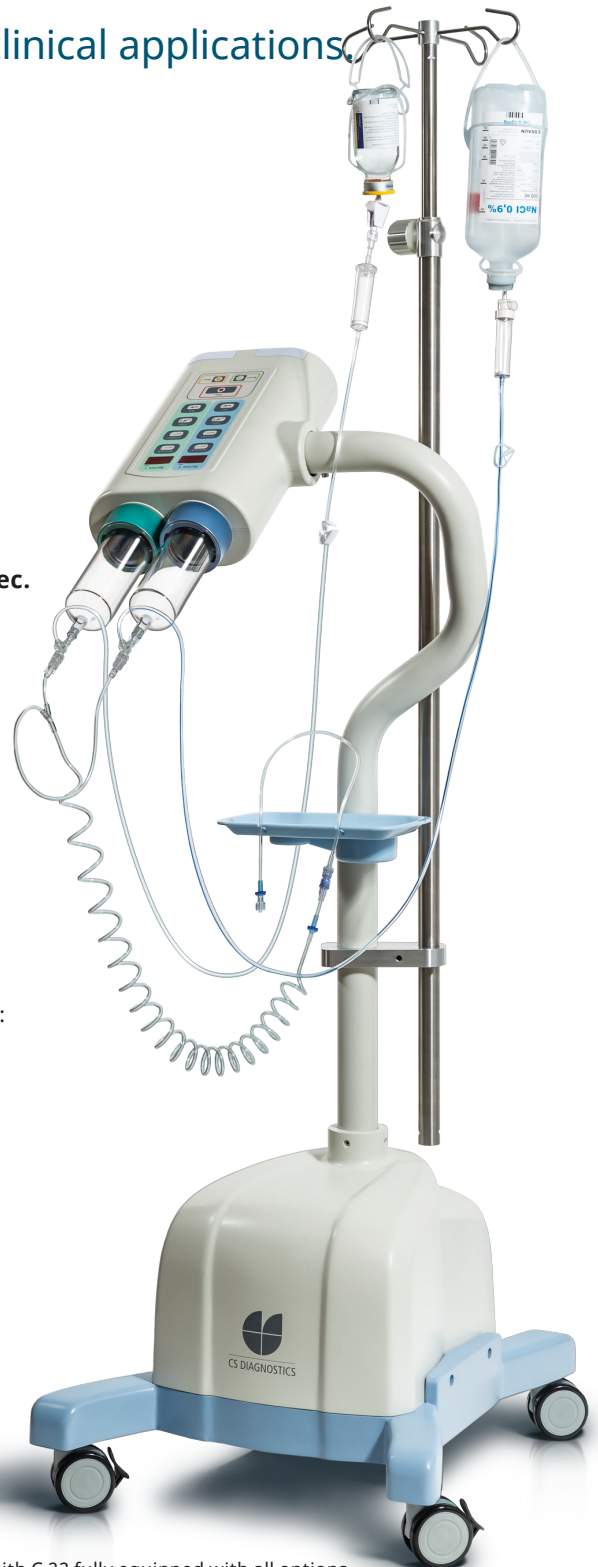


Fig. shows Zenith C-22 fully equipped with all options.

# Zenith C-60

## Dual-head Injector system for MRI



The C-60 injector meets all MRI imaging requirements and is compatible with MRI scanning systems up to a field strength of 3 Tesla.

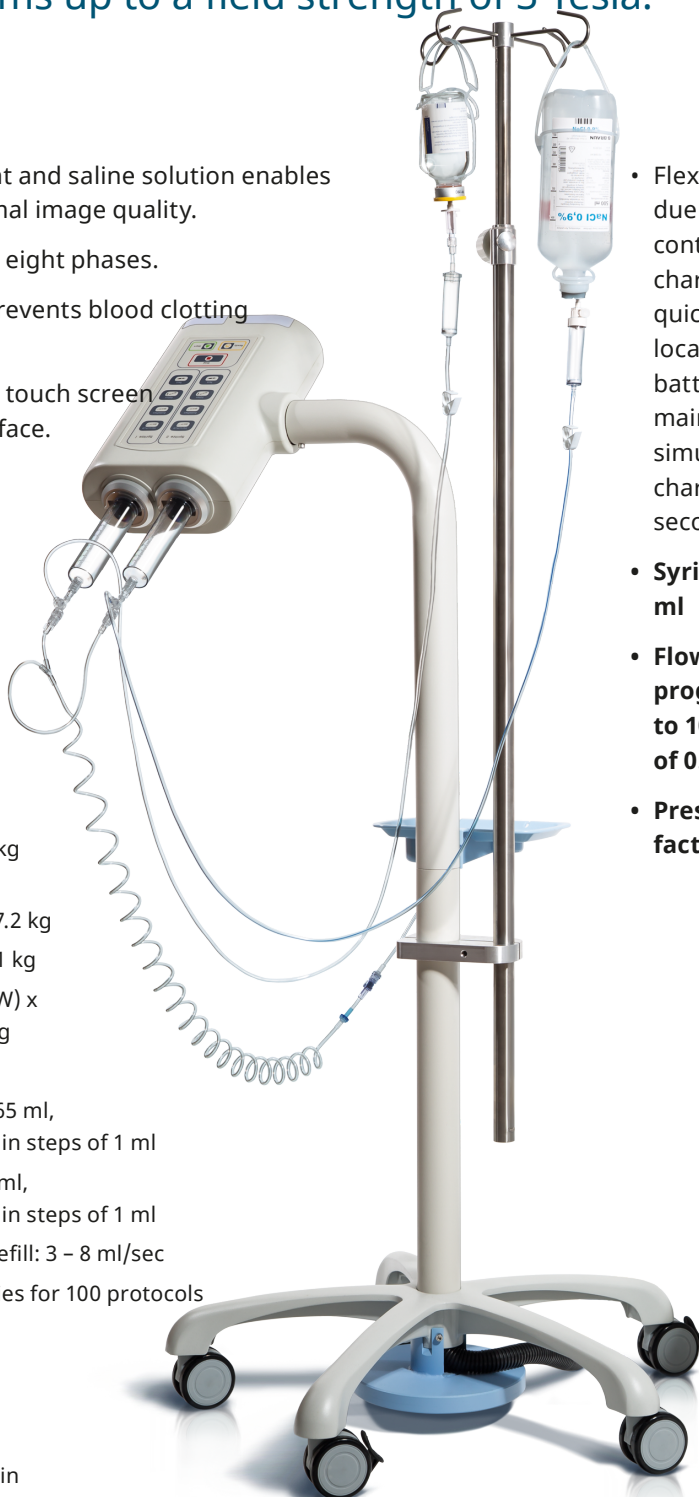
### Features and specifications:

- Variable combination of contrast agent and saline solution enables targeted signal amplification for optimal image quality.
- Individual injection profiles with up to eight phases.
- The KVO program (Keep Vein Open) prevents blood clotting and thus vascular occlusion.
- Intuitive operation with a large colour touch screen and an easy-to-understand user interface.
- Greatest possible hygiene due to the smooth and clear design.
- The powerful 8 Ah battery allows particularly long operating times.

### Technical specifications / injection parameters:

- Injector dimensions:  
74 (W) x 72 cm (D) x 119 cm (H), weight: 14 kg
- Control unit dimensions:  
19 cm (W) x 26 cm (H) x 43 cm (D), weight: 7.2 kg
- Large 12.1" Color Touch Screen, Weight: 4.1 kg
- Battery capacity: 8 Ah, dimensions: 4 cm (W) x 13 cm (D) x 11 cm (H), Battery weight: 0.6 kg
- Electrical connection: 220 V AC; 50/60Hz
- Syringe 1 (for contrast medium): capacity 65 ml, fillable from 0 ml up to maximum capacity in steps of 1 ml
- Syringe 2 (für saline solution): capacity 65 ml, fillable from 0 ml up to maximum capacity in steps of 1 ml
- Delay time: 0 to 3599 seconds, automatic refill: 3 – 8 ml/sec
- Injections: 1 to 8 phases, storage capabilities for 100 protocols
- Test injection: test volume 1 – 10 ml and flow rate 1 – 3 ml/second
- Pause phase: 0 second to 999 seconds in 1 second increments
- KVO: programmable 0,1 ml/min – 0,6 ml/min

- Flexible power supply due to the integrated continuous battery charging system, quick change between location-independent battery operation and mains connection with simultaneous battery charging function within seconds.
- **Syringe capacity: 2 x 65 ml**
- **Flow rate: programmable from 0.1 to 10.0 ml/sec in steps of 0.1 ml/second**
- **Pressure limitation: factory set to 300 psi**



CE 0482

Fig. shows Zenith C-60 fully equipped with all options.



# CS DIAGNOSTICS

Stresemannallee 4c, 41460 Neuss, Germany

+49 2131 15108-71

+49 2131 15108-96

[service@cs-diagnostics.de](mailto:service@cs-diagnostics.de)

[www.cs-diagnostics.com](http://www.cs-diagnostics.com)